

Winter 3-1-1996

## Untitled

Michelle Toms  
*College of DuPage*

Follow this and additional works at: <https://dc.cod.edu/plr>

---

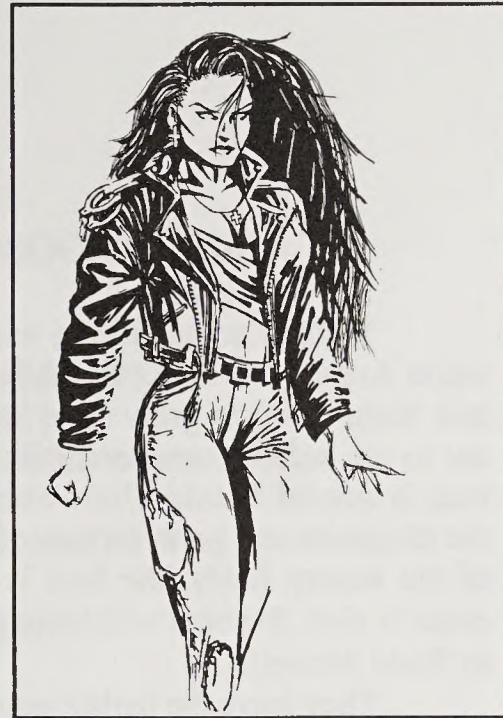
### Recommended Citation

Toms, Michelle (1996) "Untitled," *The Prairie Light Review*: Vol. 16 : No. 1 , Article 37.  
Available at: <https://dc.cod.edu/plr/vol16/iss1/37>

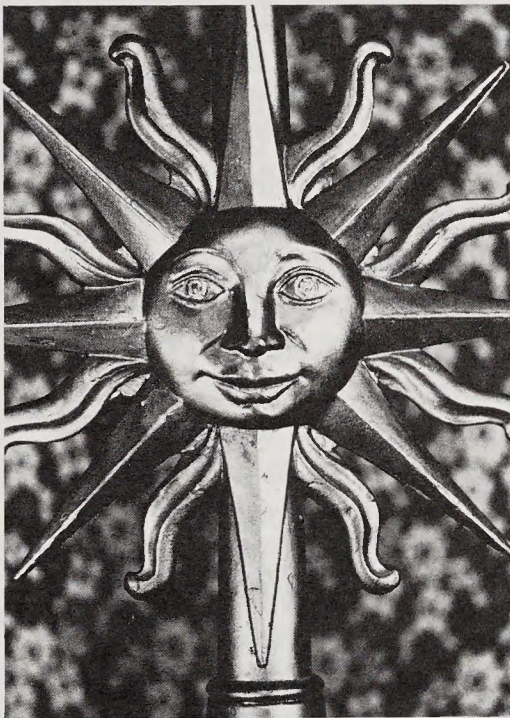
This Selection is brought to you for free and open access by the College Publications at DigitalCommons@COD. It has been accepted for inclusion in The Prairie Light Review by an authorized editor of DigitalCommons@COD. For more information, please contact [orenick@cod.edu](mailto:orenick@cod.edu).

**R**eason melted  
**E**verlasting  
**V**engeance  
**E**xisting only to replay the blow  
**N**ow, look here  
**G**rin at thee  
**E**ven now, your glue is me

-Kat Zeman



"Untitled Character"  
 -Christopher Yoon



"Gilded Soul"

## Tear

A concentrated, crystal drop  
 of emotion.

Liquid prism reflecting all  
 colors in the spectrum.

A sign of profound joy  
 Or excruciating pain.

Hardly alone, but always  
 in numbers.

What do you have to tell?

-Debbie VanDusen

**Every close encounter  
 is a judgment of death  
 preparing you  
 for the spectacular  
 BOOM!  
 of the absence of life.**

**-Michelle Toms**